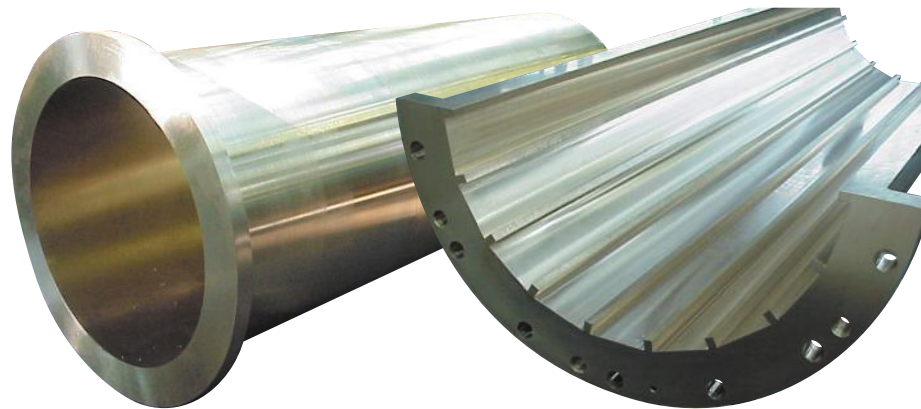




## SHIP BUILDING INDUSTRY

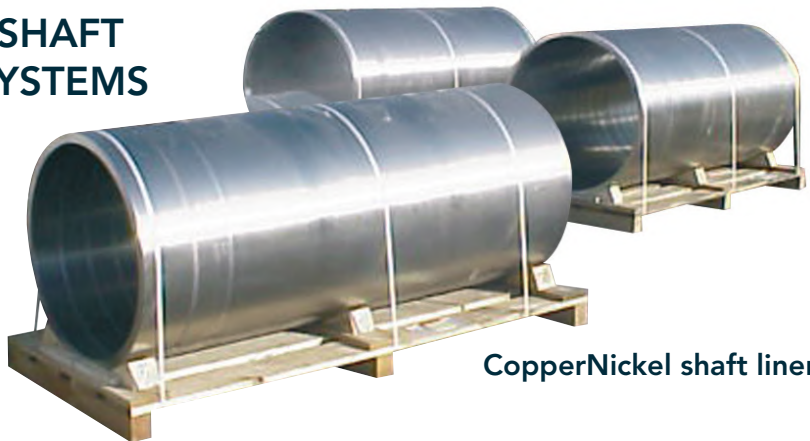
Serving your Industry with non ferrous  
and stainless steel Centrifugal Castings

Split or unsplit fully machined carriers  
for water lubricated bearings

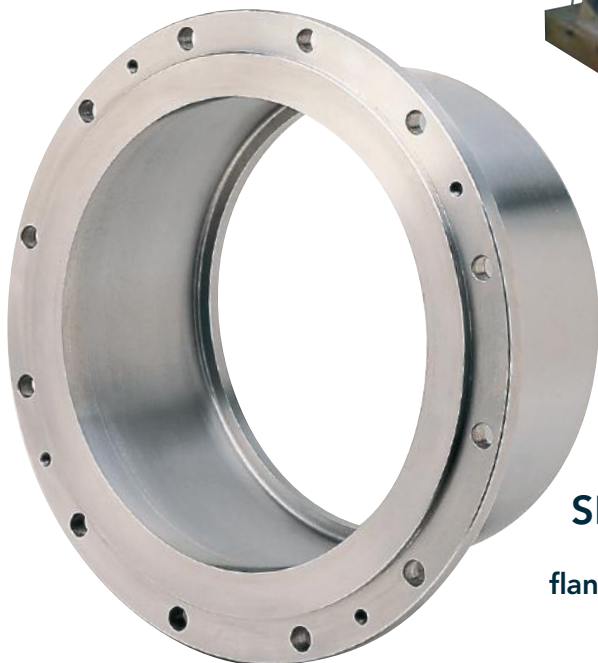


LG4 shaft liners

PROPELLER  
SHAFT  
SYSTEMS



CopperNickel shaft liners



SHAFT SEALS  
Stainless steel  
flanged components

RUDDER STOCK  
SYSTEMS

Stainless steel liners



**Please contact us for more specific products!**  
E.mail : [commercial@lbi.fr](mailto:commercial@lbi.fr) - Web site : <http://www.lbi.fr>

# CENTRIFUGAL CASTINGS FOR SHIP BUILDING INDUSTRY

## Materials

- Stainless steels
- Duplex
- Bronze
- Leaded gunmetal
- Nickel aluminium bronze
- Copper nickel 70 - 30

## Condition

- Proof machined
- Finish machined

## Advantages of centrifugal casting

- Improved corrosion resistance
- Dimensional stability
- Excellent machinability
- High mechanical properties

## Main approvals

- ISO 9001   
EN ISO 9001:2000  
Certificate N°: 71 100 8 006
- Germanischer Lloyds
- Lloyds Register of Shipping
- U.K. Ministry of Defence (N)



LBI - 26, rue de la République  
B.P. 70090 - 57360 Amnéville - FRANCE  
Telephone +33 (0) 3 87 71 15 11  
Fax +33 (0) 3 87 71 14 96  
E.mail : [commercial@lbi.fr](mailto:commercial@lbi.fr)  
Web site : <http://www.lbi.fr>

